

# Introducing - Treeby Terraces -

Where a Connected Community Lifestyle Awaits You.

Enjoy the freedom to build and own your dream two storey terrace home. Situated in a niche pocket of Anketell, Treeby Junction offers the chance to enjoy all the conveniences of this sought-after area.



A large, stylized graphic of a plant with many teardrop-shaped leaves in various shades of green and yellow, centered in the background.

# Treeby Terraces

ANKETELL

Modern Boutique Terrace House Living





# Treeby Terraces

ANKETELL

A BOUTIQUE DEVELOPMENT  
OF ONLY 24 TERRACED HOMES

For more information please contact

**Tom Carlin Team**

[sales@carlinteam.com.au](mailto:sales@carlinteam.com.au)

0403 198 014



# LOCATION AND LIFESTYLE

## **READY TO UPSCALE YOUR LIFESTYLE**

A new boutique estate Treeby Junction is a premium, niche-planned community centred around a neighbourhood shopping precinct.

Secure and sought-after, there's no shortage of things to love about life in Treeby Junction.

With an abundance of options to savour, play and connect, it's the lush, convenient lifestyle you've always wanted without putting a strain on budget.

## **THE DREAM LIFESTYLE**

Immerse yourself in the beauty of the surroundings including the nearby ocean life.









# LIFESTYLE

Your Livability Matters Most to Us.

Here's how Treeby Junction provides you with a friendly connected lifestyle.

## A CONVENIENT LOCATION TO CALL HOME

Treeby Junction is located in the southern Perth suburb of Anketell and falls under the local government area of the City of Kwinana. It is off Thomas Road and just 750m from the Kwinana Freeway intersection.

Seated close to a niche, modern neighbourhood shopping precinct, Treeby Junction is a haven for young families and professionals who desire a home well located yet away from the hustle and bustle of the city.

## PRIME REAL ESTATE

Given its convenient location and close proximity to quality amenities, buying a property in Treeby Junction is a worthy future investment. Whether you like the idea of relaxing at the beach, exploring the local sites, or just winding down in your new home, we've got your lifestyle needs covered.

Perfectly positioned to the nearby bustling town centre of Kwinana, everything you need for a connected and cosmopolitan lifestyle is close to home.

## YOUR HOME

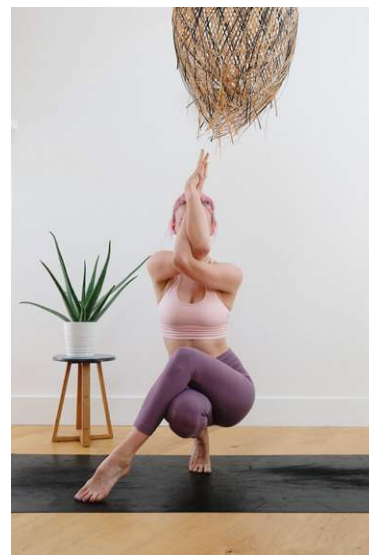
## EDUCATION ALL AROUND

Learners of all ages are catered for, with childcare centres, primary schools and secondary schools all nearby. It is a family-oriented area with a great community feel, allowing your children to thrive.

## ENTERTAINMENT IS ALWAYS NEARBY

When you are ready to relax there's always something to do in and around Kwinana. Kwinana Requatic - Recreation Centre and pool has indoor heated pools, fitness classes, swim classes, basketball, netball, volleyball, junior sports and more.

Next door are sports field and a dog park.






# AN INSPIRED AND UNIQUE TERRACE HOME OFFERING

## TAKE A SNEAK PEEK

Enjoy the freedom to own your dream home. Modern design, with an exceptional selection of fixtures and fittings.















**Treeby Terraces**



24  
Townhouses

3 and 4  
Bedroom  
Options



# Treeby Terraces

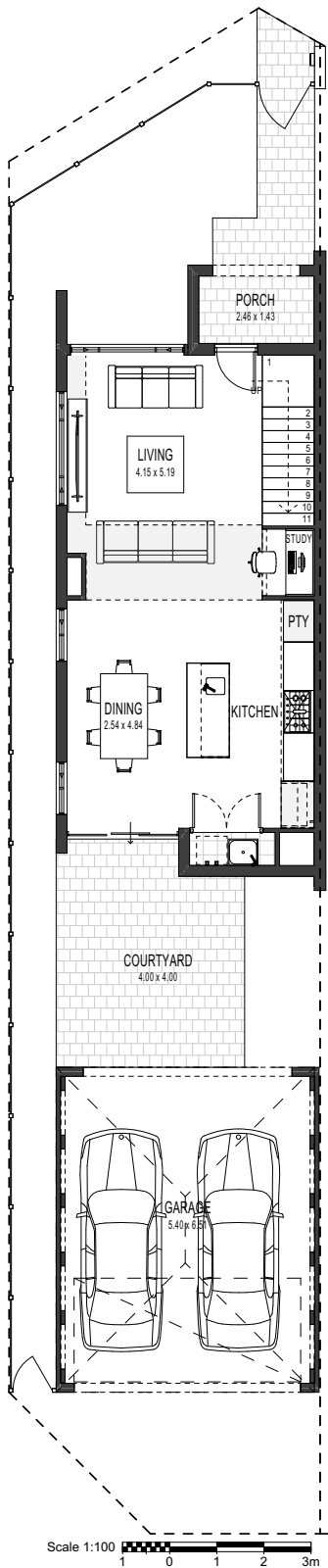
6M CORNER



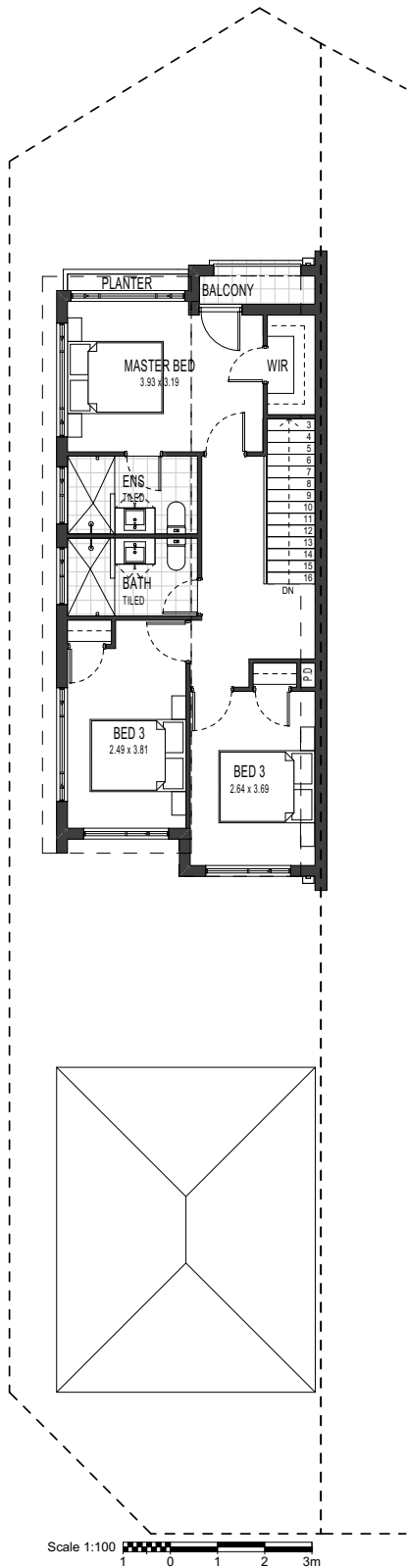
### Area Table

GARAGE	41.27m <sup>2</sup>
GROUND FLOOR	61.48m <sup>2</sup>
PORCH	4.49m <sup>2</sup>
FIRST FLOOR	66.86m <sup>2</sup>
BALCONY	2.30m <sup>2</sup>

BED 3  
BATH 2  
CAR 2



0. GROUND FLOOR  
1:100



2. FIRST FLOOR  
1:100

# Treeby Terraces

6M



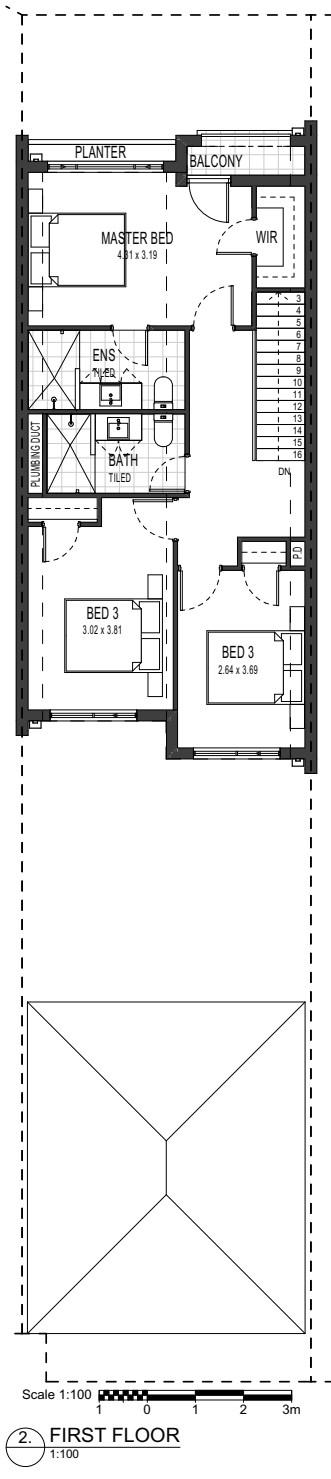
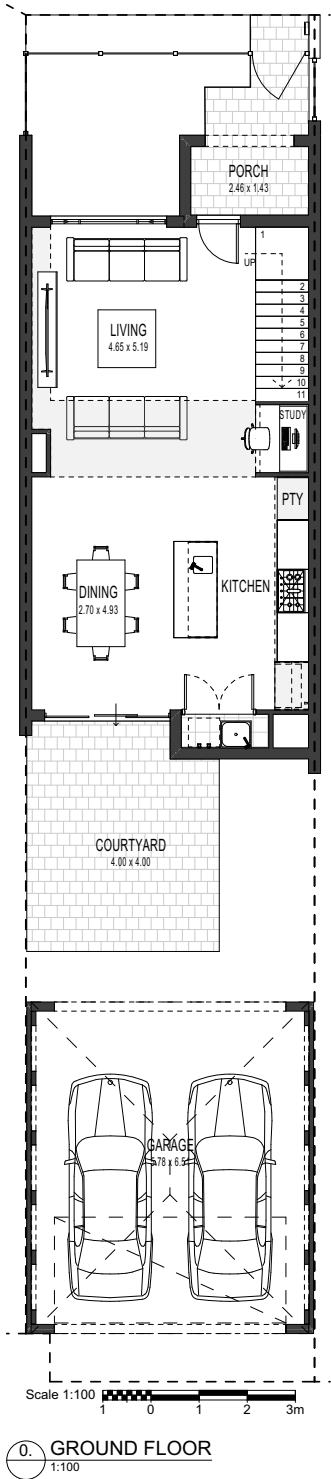
Area Table

GARAGE	41.27m <sup>2</sup>
GROUND FLOOR	65.59m <sup>2</sup>
PORCH	4.69m <sup>2</sup>
FIRST FLOOR	71.55m <sup>2</sup>
BALCONY	2.30m <sup>2</sup>

BED  
3

BATH  
2

CAR  
2





# Treeby Terraces

7.5M



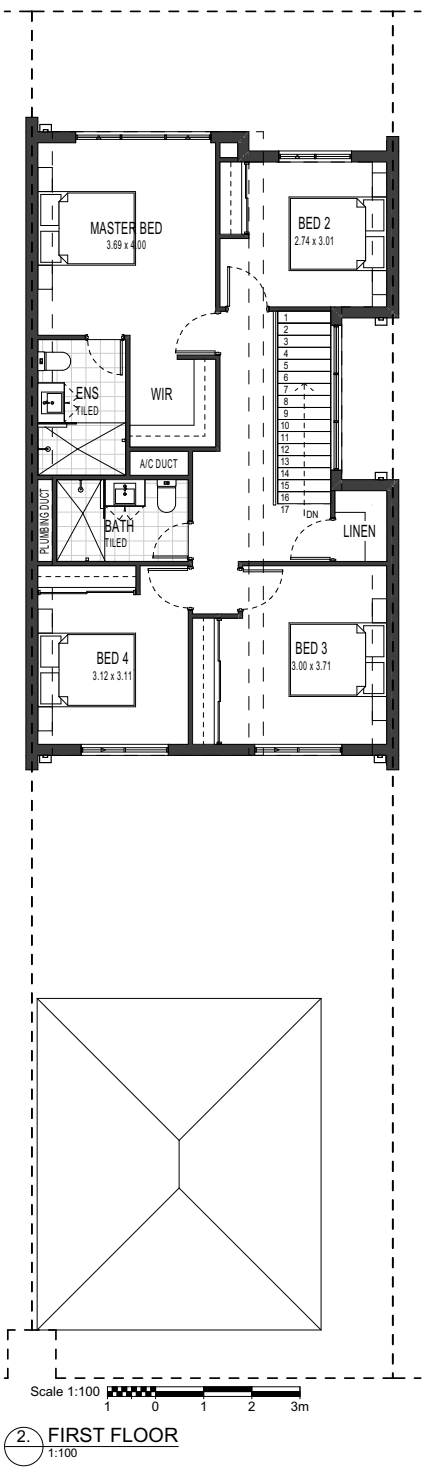
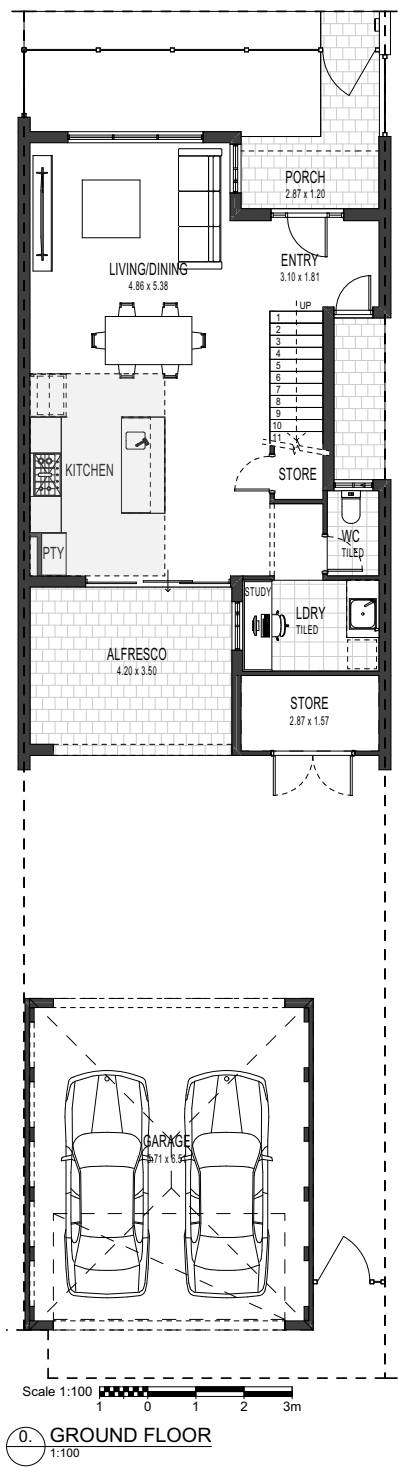
Area Table

GARAGE	41.27m <sup>2</sup>
GROUND FLOOR	73.77m <sup>2</sup>
PORCH	4.49m <sup>2</sup>
ALFRESCO	15.16m <sup>2</sup>
FIRST FLOOR	92.59m <sup>2</sup>

BED  
4

BATH  
2

CAR  
2



# Treeby Terraces

7.5M CORNER



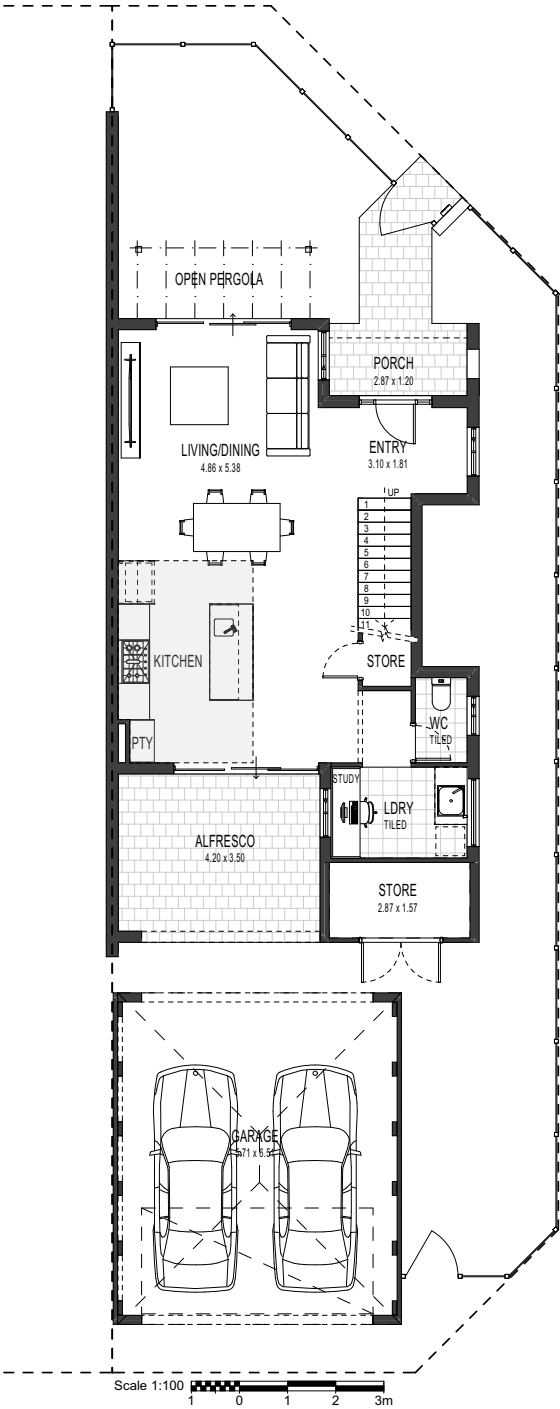
### Area Table

GARAGE	41.27m <sup>2</sup>
GROUND FLOOR	74.73m <sup>2</sup>
PORCH	4.67m <sup>2</sup>
ALFRESCO	15.16m <sup>2</sup>
FIRST FLOOR	93.70m <sup>2</sup>

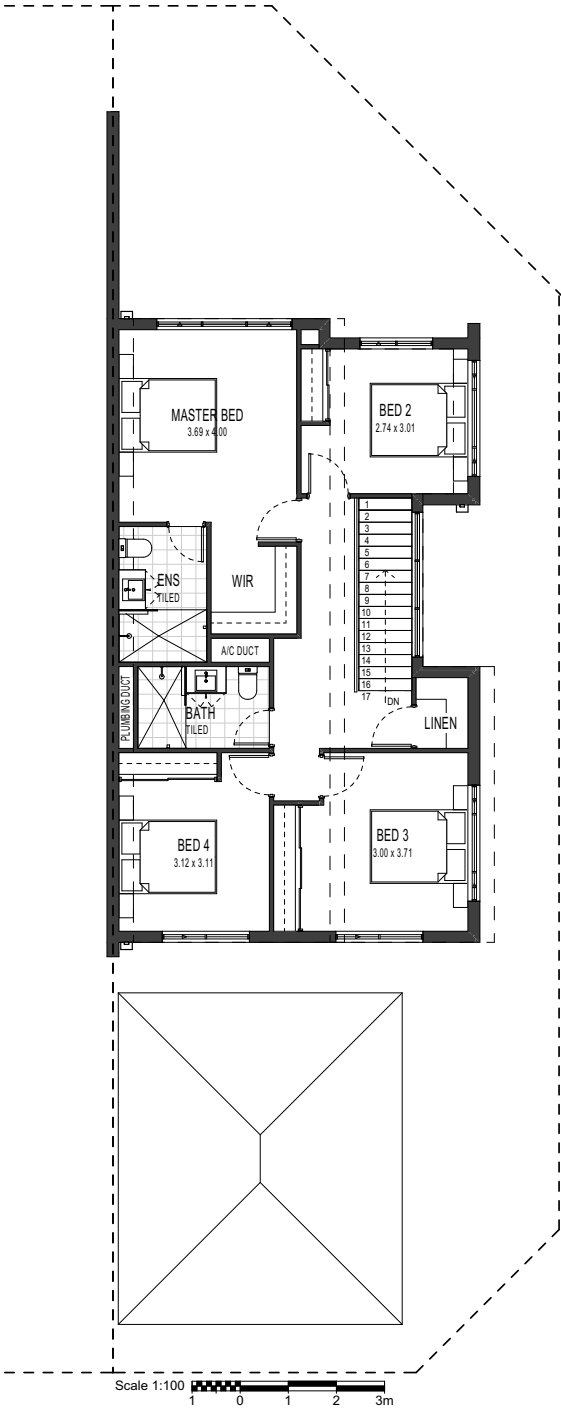
BED  
4

BATH  
2

CAR  
2



0. GROUND FLOOR  
1:100



2. FIRST FLOOR  
1:100





# SPECIFICATIONS



DISCLAIMER: The information above should be used as a guide only. The Seller and companies related to it and its Agents do not warrant the accuracy of the information or illustrations and do not accept any liability for any error or discrepancy in that information. While the Seller believes that the floor plans and specifications are accurate at time of publication, information is subject to change and The Seller disclaims any liability for any loss or damage which may arise from any person or party acting in reliance upon this information.



# Treeby Terraces

## DUNE SCHEME



<b>Stone</b>	Q Stone Blanc Naturel - throughout
<b>Cabinetry</b>	<p>Polytec Blossom White Matt - kitchen underbench cupboards/pantry/fridge overheads &amp; laundry</p> <p>Polytec Verdelho Smooth - kitchen overheads obo the cooktop only</p> <p>Polytec Plantation Ash Woodmatt - ensuite &amp; bathroom</p>
<b>Cabinet Handles</b>	Hafele 106.69.433 to cupboards & doors. Fingergrip to overheads where applicable
<b>Tiling</b>	<p>Rectified Porcelain Portland Bianco 298x600 tile floor &amp; wall to laundry, bathroom &amp; ensuite including balcony floor</p> <p>Orion Bianco Satin Handmade subway laid vertical stackbond - kitchen splashback</p> <p>Kasko Handmade Finger Jumbo White Mosaic 300x300 laid vertical - kitchen splashback (upgrade option)</p>
<b>GF Flooring</b>	Vinyl plank in European Oak - main living areas
<b>FF Flooring</b>	Sixth Avenue Carpet 514 Light Stone - staircase, upper floor hallway and all bedrooms including robes
<b>Internal Painting</b>	Dulux Casper White Quarter



# Treeby Terraces

## OAK SCHEME



Stone	Q Stone Carrara Grigio - throughout
Cabinetry	<p>Polytec Blossom White Matt - kitchen underbench cupboards/pantry/fridge overheads &amp; laundry</p> <p>Polytec Ferro Matt - kitchen overheads obe the cooktop only</p> <p>Polytec Notaio Walnut Woodmatt - ensuite &amp; bathroom</p>
Cabinet Handles	<p>Hafele 106.69.433 to cupboards &amp; doors.</p> <p>Fingergrip to overheads where applicable</p>
Tiling	<p>Rectified Porcelain Capri Taupe 298x600 tile floor &amp; wall to laundry, bathroom &amp; ensuite including balcony floor</p> <p>Orion Bianco Satin Handmade subway laid vertical stackbond - kitchen splashback</p> <p>Kasko Handmade Finger Jumbo White Mosaic 300x300 laid vertical - kitchen splashback (upgrade option)</p>
GF Flooring	Vinyl plank in Mocha Spotted Gum - main living areas
FF Flooring	Sixth Avenue Carpet 755 Moonstone - staircase, upper floor hallway and all bedrooms including robes
Internal Painting	Dulux Feather Soft




# MEET CACHET HOMES



Cachet Homes understand what people want when building with a custom home builder. Here's 6 reasons to choose Cachet Homes, with information on how we deliver on these commitments to you.

- Your locally based custom home builder
- Exceptional design of custom homes
- Quality construction & craftsmanship
- Clear upfront pricing and great value
- Personal service and clear communication
- Reputable, award-winning builder

Cachet Homes is a multiple award winner in Western Australia through both the Master Builders Association and Housing Industry Association. Recognition and awards from associations and peers in the industry is the best demonstration of our slogan... Quality that Attracts Admiration.





# For more information please contact

Tom Carlin Team



[sales@carlinteam.com.au](mailto:sales@carlinteam.com.au)

0403 198 014

